

**THIS AERIAL DEVICE IS NON-INSULATING. IT PROVIDES NO ELECTRICAL PROTECTION. CONTACT WITH OR INADEQUATE CLEARANCE TO AN ENERGIZED LINE OR APPARATUS IS AN ELECTROCUTION HAZARD.**

Notes:

Notes:

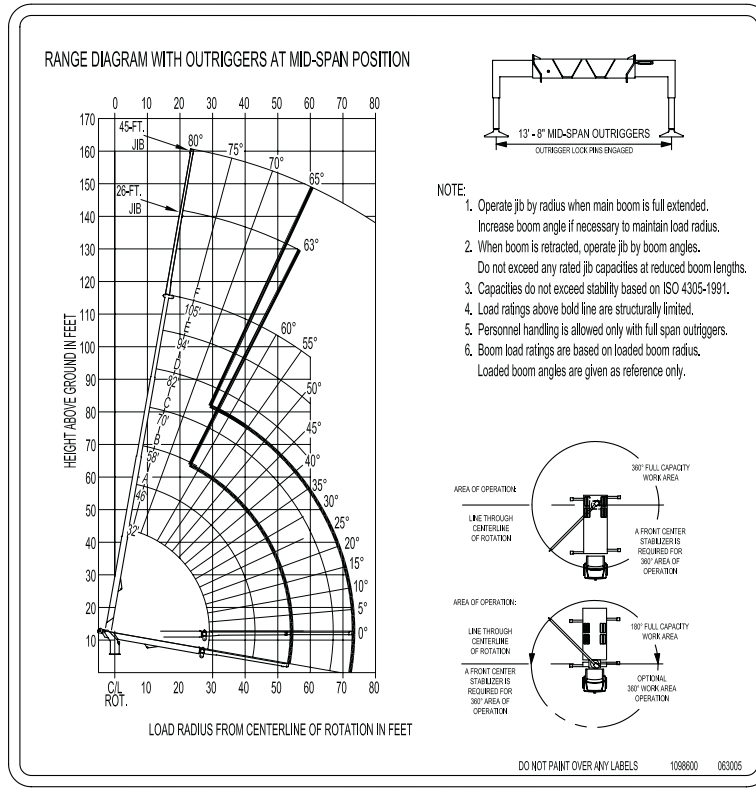
MAIN BOOM LOAD RATINGS WITH OUTRIGGERS AT MID-SPAN POSITION																	
MAIN BOOM LOAD RATINGS										JIB LOAD RATINGS							
LOAD RATINGS IN LBS WITH OUTRIGGERS AND STABILIZERS EXTENDED										LOAD RATINGS IN LBS WITH OUTRIGGERS AND STABILIZERS EXTENDED							
LOAD RADIUS IN FEET	LOADED BOOM ANGLE	31-ft	LOADED BOOM ANGLE	A	LOADED BOOM ANGLE	B	LOADED BOOM ANGLE	C	LOADED BOOM ANGLE	D	LOADED BOOM ANGLE	E	LOADED BOOM ANGLE	F	24-ft JIB	24-ft JIB RETRACTED	45-ft JIB EXTENDED
5	80	56,000															
6	79	44,000															
8	75	36,600	80	30,000													
10	71	31,000	77.5	27,000													
12	66.5	26,500	75	24,900	79	22,500											
14	62.5	20,500	72.5	21,800	76.5	19,800	79.5	18,500									
16	58	18,500	69.5	19,500	74.5	17,700	78	16,000	80	14,300							
18	53	14,000	66.5	15,800	72.5	16,000	76	14,800	79	13,700							
20	48	11,000	63.5	12,800	70.5	13,300	74.5	13,400	77.5	12,500	79.5	11,500					
25	34	7,300	56.5	8,050	65	8,200	70	8,650	73.5	8,700	76.5	8,900	78.5	8,400			
30			48	5,750	59	5,950	65.5	6,050	69.5	6,100	73	6,300	75	6,400			
35			38	3,800	52.5	4,150	60.5	4,250	65.5	4,300	69.5	4,500	72	4,600			
40			24.5	2,600	45.5	2,950	55	3,000	61.5	3,100	66	3,200	69	3,300			
45					37.5	2,000	49.5	2,100	57	2,150	62	2,300	65.5	2,400			
50					27	1,250	43.5	1,400	52.5	1,450	58.5	1,550	62.5	1,700			
55							37	800	47.5	900	54.5	1,000	59	1,050			
60									42.5	500	50.5	550	55.5	550			
0	4,650	0	1,100	0	800												
ADD TO CAPACITIES WHEN JIB STOWED (lb)										ADD WHEN REMOVING TWO SECTION JIB (lb)							
850										600							
550										350							
										450							
										400							
										350							
										300							
										250							
										200							
										150							
										150							

ELLIOTT EQUIPMENT CO. SUPPLIED LOADLINE EQUIPMENT DEDUCTIONS:									
DOWNHAUL WEIGHT.....180 lbs									
ONE SHEAVE BLOCK.....375 lbs									
TWO SHEAVE BLOCK.....640 lbs									
THREE SHEAVE BLOCK.....870 lbs									
AUXILIARY SHEAVE.....100 lbs									

1-PART LINE	2-PART LINE	3-PART LINE	4-PART LINE	5-PART LINE	6-PART LINE	7-PART LINE	NOTICE
							<ul style="list-style-type: none"> <li>- DO NOT DEACHEAD LINE BLOCK AGAINST BOOM TIP WHEN EXTENDING BOOM.</li> <li>- KEEP AT LEAST 5 WRAPS OF LOADLINE ON THE WINCH DRUM AT ALL TIMES.</li> <li>- USE ONLY 3/8" DIAMETER WIRE ROPE, AS SPECIFIED BELOW, WITH THE PROPER BREAKING STRENGTHS LISTED.</li> <li>- ANTI-TWO-BLOCK SYSTEM MUST BE ENGAGED OPERATING CONVENTION BEFORE OPERATING CRANE. SEE OPERATION &amp; SAFETY MANUAL.</li> </ul>
MAX PULL: 9,600 lbs	19,200 lbs	28,800 lbs	38,400 lbs	48,000 lbs	57,600 lbs	64,000 lbs	
MIN PULL: 9,090 lbs	18,120 lbs	27,180 lbs	36,240 lbs	45,300 lbs	54,360 lbs	64,000 lbs	
CRANE MEETS ASME B30.1 REQUIREMENTS AT TIME OF MANUFACTURE							DO NOT PAINT OVER ANY LABELS 1098600 063005



**THIS AERIAL DEVICE IS NON-INSULATING. IT PROVIDES NO ELECTRICAL PROTECTION. CONTACT WITH OR INADEQUATE CLEARANCE TO AN ENERGIZED LINE OR APPARATUS IS AN ELECTROCUTION HAZARD.**

Elliott Equipment Company reserves the right to change the specification of any unit at any time without prior notice. This brochure is only a statement of general specifications on the date of this publication. For more detailed info on specific HiReach trucks go to [www.elliottequip.com](http://www.elliottequip.com)