



## AT A GLANCE:

- 30,000 lbs. max. capacity
- 45' 7" vertical reach
- 36' horizontal reach
- 15' boom reach
- Continuous rotation
- 17,000 lbs. deck capacity
- 4-wheel steer
- Hydraulic outriggers
- 7' 11" overall height
- Built tough to work tough  
in all industrial applications

**bmc BRODERSON**  
Manufacturing Corp.

P.O. Box 14770, Lenexa, Kansas 66215  
(913) 888-0606 • FAX (913) 541-0690



# IC-200

## IC-200-1B

LOAD RADIUS FEET	BOOMS RETRACTED		BOOMS EXTENDED		15' BOOM EXTENSION INSTALLED	
	ON O/R*	ON O/R*	ON RUBBER	ON O/R*	ON RUBBER	
6	30000	30000	16000	7500	7500	
8	25000	24000	13000	7500	7500	
10	20000	20000	11000	7100	7100	
12	16000	16000	9300	6150	6150	
14		11950	7000	5425	5425	
16		10500	5025	4850	4850	
19		8875	3825	4175	4175	
22		7600	2950	3675	3675	
25		6350	2450	3275	3275	
28		5300	2125	3000	2600	
31				3000	2075	
34				3000	1700	
38				3000	1300	
43				2800	975	

USE SINGLE PART LOAD LINE FOR LOADS TO 7500 LBS.



USE TWO PART LOAD LINE FOR LOADS TO 15000 LBS.



USE FOUR PART LOAD LINE FOR LOADS TO 30000 LBS.

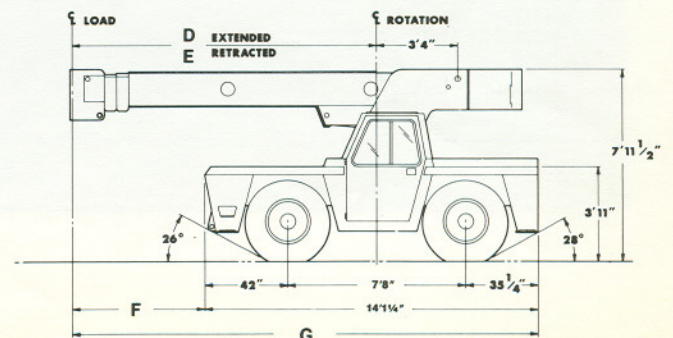
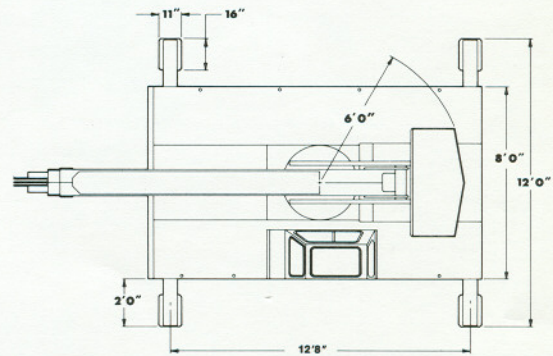
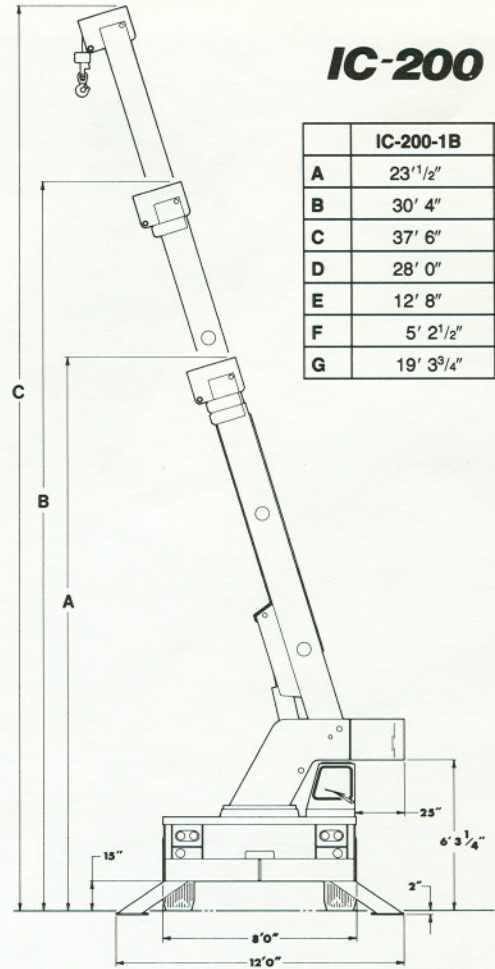


## IC-200-2B

LOAD RADIUS FEET	BOOMS RETRACTED		BOOMS EXTENDED		15' BOOM EXTENSION INSTALLED	
	ON O/R*	ON O/R*	ON RUBBER	ON O/R*	ON RUBBER	
6	30000	30000	16000	7500	7500	
8	25000	23900	13000	7500	7500	
10	19500	20000	11000	7100	7100	
12	16000	16000	9300	6150	6150	
14	13500	12500	6600	5425	5425	
16		9500	5030	4850	4850	
19		7900	3700	4175	4175	
22		7050	3125	3675	3675	
25		6100	2225	3275	3275	
28		5100	1825	3000	2450	
32		4080	1400	3000	1850	
36		3315	1100	3000	1450	
40				2800	1100	
45				2500	775	
51				2200	700	

## IC-200

	IC-200-1B	IC-200-2B
A	23' 1/2"	25' 5"
B	30' 4"	35' 6"
C	37' 6"	45' 7"
D	28' 0"	36' 2"
E	12' 8"	15' 2"
F	5' 2 1/2"	7' 8 1/2"
G	19' 3 3/4"	21' 9 3/4"





**General:**

	IC-200-1B	IC-200-2B
<b>Weight:</b>	25,910 lbs.	26,250 lbs.
<b>Road Speed</b>	19 MPH	19 MPH
<b>Turning Radius:</b>		
(C/L of outer tire)	13'5"	13'5"
Aisle width for 90° turn	11'6"	11'6"
<b>Boom Movement:</b>		
Rotation	Continuous	Continuous
Elevation	0° to 73°	0° to 73°
Extension	12'8" to 28'	15'2" to 36'2"
<b>Draw Pull</b>	17,400*	17,400*
<b>Gradeability</b>	57%*	57%*

\* Calculated—Wheels will spin before these values are reached.

**Engine:**

	Standard	Optional	Optional	Optional
<b>Make</b>	Chrysler	Perkins	Deere	Cummins
<b>Model</b>	HB-225	4.236	4239	4B3.9
<b>Type</b>	Gas	Diesel	Diesel	Diesel
<b>No. Cyl.</b>	6	4	4	4
<b>C.I.D.</b>	225	236	239	239
<b>HP @ Gov.</b>	97	80	75	76
<b>Speed</b>				
<b>Fuel Tank</b>	30 gallon capacity			

**Transmission:**

<b>4-Speed:</b>		<b>Reversing Gear Box</b>
<b>Make:</b> Warner Gear		<b>Make:</b> Warner Gear
<b>Model:</b> T-18		<b>Model:</b> PR-1
<b>Gear Ratios:</b>		<b>Torque Converter:</b>
1st	6.324:1	<b>Make:</b> Borg & Beck
2nd	3.092:1	<b>Model:</b> "L"
3rd	1.686:1	<b>Stall Ratio:</b> 2.0:1
4th	1.0:1	

An oil cooler for torque convertor and reversing gear box is standard equipment.

**Axles:**

<b>Front Drive/Steer Axle:</b>	<b>Rear Steer only Axle:</b>
<b>Make:</b> Clark	<b>Make:</b> Rockwell
<b>Model:</b> 12S0736	<b>Model:</b> FL-931
<b>Gear Ratio:</b> 16.65:1	<b>Oscillation:</b> 1 1/2° either direction

**Brakes:**

<b>Service:</b>	4-Wheel hydraulic drum with vacuum booster
<b>Parking:</b>	Band type mounted in drive line

**Tires:**

**Standard:** 15:00 x 22.5, 16-ply rating, highway type tread.

**Chassis:**

<b>Cargo Deck:</b>	71 sq. ft. of deck area 17,000 pounds capacity
<b>Steps:</b>	Located on front corners for easy access to deck area
<b>Outriggers:</b>	Four hydraulic outrigger of box beam construction. Independent controls for left and right hand outriggers. Direct connected holding valves. Outrigger pad dimension: 11" x 16"

**Operators Compartment:**

<b>Control Station:</b>	Provides one position access to all chassis and crane functions.
-------------------------	--

**Electrical:**

<b>12 Volt D.C.</b>	
<b>Lighting Group:</b>	1 pair headlights with high and low beams for driving; integral tail, brake, turn signal and back-up lights in rear; front turn signals.
<b>Instrument Group:</b>	Fuel, ammeter, oil pressure, water temperature, convertor oil temperature gauges and hourmeter.

**Hydraulic System:**

	Tandem pump, directly-driven by engine crankshaft, rated at 22 and 34 G.M.P. 34 gallon reservoir standard.
--	---

**Crane:**

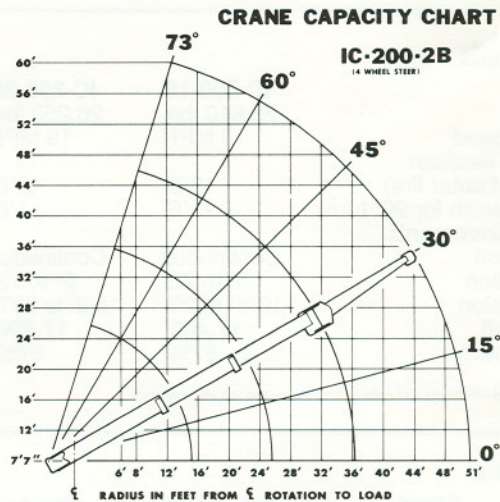
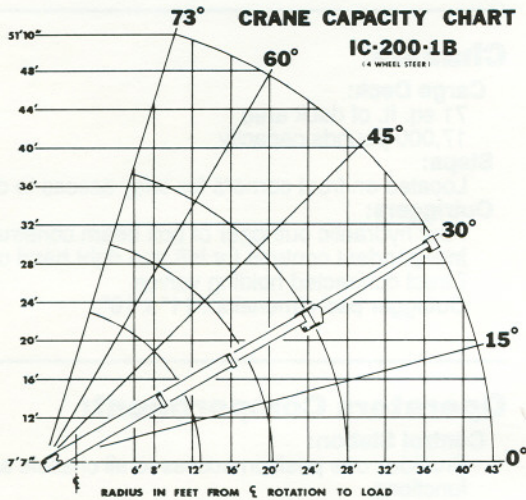
<b>Boom Assembly:</b>	Three section boom assembly equipped with bearing pads for efficient support, double-acting hydraulic cylinders equipped with direct-connected holding valve and boom angle indicator on each side of boom.
<b>Boom Rotations:</b>	Heavy-duty ball bearing rotation gear with external teeth support boom. Rotation is powered by a hydraulic motor and worm gear drive. Boom is attached by high strength weldment.
<b>Boom Winch:</b>	Turret-mounted, spur gear winch, is hydraulically powered to provide a bare drum line pull of 10,000 pounds at a speed of 110 feet per minute. 220 feet of 1/2 inch wire rope, downhaul weight and swivel hook are standard.

**Boom Attachments:**

<b>Anti-Two-Block Device:</b>	Prevents damage to hoist rope and/or machine components from accidentally pulling load hook against boom tip
-------------------------------	--



# IC-200



**IC-200-1B Industrial Crane with 12'8"-28'2" boom (1)**  
**IC-80-2D Industrial Crane with 15'2"-36'2" boom (2)**

## Options:

### Engine:

**LP Gas Fuel System Kit (3).**  
Contains all necessary components for LP gas operation.

**Dual Fuel System Kit (4).**  
Contains all necessary components for both LP and gasoline.

**Diesel Engine.**  
Perkins Model D4.236, 236 C.I.D., 80 H.P. (5).  
John Deere Model 4239D, 239 C.I.D., 75 H.P. (6)  
Cummins Model 4B3.9, 239 C.I.D., 80 H.P. (7).

**Spark-Arrester Muffler (8).**  
Installed in addition to standard muffler.

**Engine Shutdown Gauges (9).**  
Shuts engine off when high water temperature or low engine oil pressure occurs.

### Axle:

**No-Spin Differential (10).**  
Differential equipped with "No-Spin" feature.

### Tires:

Spare Tires and Wheels (11).

### Chassis:

**Accessory Storage Box (12).**  
Storage box is 14" deep x 10<sup>3</sup>/<sub>4</sub>" long x 36<sup>1</sup>/<sub>2</sub>" wide.  
Located in front carry deck.

**Auxiliary Winch (13).**  
Mounted behind front bumper, hydraulically driven with control in operators console.

**Pintle Hook (14).**  
Pintle hook mounted on rear frame. 24 ton capacity.

**Headlight and Taillight Grilles (15).**  
Welded steel protective grilles for headlights and taillights.

**Lifting Rings (16).**  
Lifting ring at each corner of carry deck so sling can be attached for lifting crane.

### Operators

**Compartment:**  
**Operator Guard (17).**  
Tubular steel weldment with heavy expanded steel mesh top section.

**All-Weather Cab (18).**  
Rigid-mounted canopy section and removable hinged door. Includes heater, electric windshield wiper, one sliding glass window in the door and one fold-out window in rear to provide flow-through ventilation. Defroster fan included.

### Windshield Washer (19).

Includes reservoir pump and nozzle.

### Floormat (20).

Vinyl mat with foam backing.

### Operator Suspension Seat (21).

Provides additional operator comfort.

### Electrical:

**Back-Up Alarm (22).**  
Provides pulsating sound when transmission is in reverse.

**Strobe Lights (23).**  
Yellow strobe light mounted on each side of turret weight box.

**Lighted Instrument Gauges (24).**  
Gauges equipped with lights for night operations.

**Amber Rotating Beacons (25).**  
Amber rotating beacon mounted on each side of turret weight box.

**Boom Work Lights (26).**  
One work light mounted to boom to light boom tip and one work light mounted to turret to light ground under boom tip.

### Hydraulic:

**Overload Alert System (27)**  
Designed to prevent excessive overloads on crane structures.

### Boom Attachments:

**Boom Extension — 15 Foot (28).**  
Boom stowable. Fiberglass bucket(s) or work platform can be attached to boom extension tip.

**Fiberglass Bucket (One each) (29).**  
24" x 24" x 42" Deep personnel bucket with maximum capacity of 300 pounds.

**Fiberglass Bucket (Two each): (30).**  
Same as item 29 except two buckets are provided.

**Work Platform (31).**  
69" x 32<sup>7</sup>/<sub>8</sub>" x 42" deep. Constructed of steel tubing with expanded-metal floor. maximum capacity of 600 pounds.

**Bucket/Platform Brake (32).**  
Friction brake for holding bucket(s) or work platform in a fixed position.

**Four-Part Sheave Block (33).**  
Required for maximum capacity lifts.

**Two-Part Sheave Block (34).**  
Required for lifts from 7,500 pounds to 15,000 pounds.

**Searcher Hook (35).**  
3,000 pound capacity, mounts to boom tip.

**BMC BRODERSON**  
Manufacturing Corp.

P.O. Box 14770, Lenexa, Kansas 66215  
(913) 888-0606 • FAX (913) 541-0690